
OUR YEAR TOGETHER

District Assembly Training Seminar

BY: Zakaria El-Shafei
DG 2008-2009

Don Kurn LEE D. K. LEE



Dong Kurn Lee is chairman of Bubang Co. Ltd and Bubang Techron Co. Ltd., manufacturing companies in Seoul.

D.K. currently serves as a trustee to both the Busan College of Information Technology and Semyung University.

D.K. is a past president of his high school and college alumni associations..

A member of the Rotary Club of Seoul Hangang since 1971, D.K. has served RI as director, treasurer, district governor, RI training leader, and zone and regional coordinator for membership development.

He also has served as a Rotary Foundation trustee and regional Rotary Foundation coordinator.

He is chair of the Polio Eradication Private Sector Initiative in Korea.

D.K. is a recipient of The Rotary Foundation Citation for Meritorious Service.

As district governor, he was recognized at the 1996 RI Convention as the winner of the **Calgary Challenge** for the most successful membership development efforts.

The message

- “Our responsibilities as Rotary leaders: to do the most good we can and inspire other Rotarians to do the same.”
- “It is the job of the district governors and senior leaders to guide, to motivate, and to encourage our clubs to focus their efforts wisely.”
- “Together, our abilities are stronger. Together, we really can make a lasting difference on a global scale. Together, there is no limit to what we can accomplish.”

The message

- Like project decisions of individual clubs, a president-elect's choice of emphasis is a very serious matter.
- Will continue the current year emphasis:
- WATER.
- LITERACY.
- HEALTH and HUNGER.
- Focusing on **REDUCING PREVENTABLE CHILD MORTALITY.**

-
- **30,000** the number of children under the age of five who die every day from preventable causes.
 - Children die needlessly of pneumonia, measles, and malaria for the lack of basic medicines, vaccines, and mosquito nets.
 - They die of diarrheal illnesses or a lack of a packet of rehydration salts that costs 10 cents. They are killed by illnesses that become deadly in combination with poor sanitation and malnutrition.
 - They die because their families are trapped in a cycle of extreme poverty, a cycle that is not interrupted because there is no access to education.

30,000

-
- **30,000 CHILDREN UNDER THE AGE OF FIVE die because their needs are not met in the areas of water, health, hunger, and literacy.**

The message

- In 2008-2009
- I will ask you all to **Make Dreams Real** for the world's children.
- This will be our theme and my challenge to all of you.





**D.K. Lee and Young Ja
Make Dreams Real**



Make Dreams Real

D.K. Lee
Rotary International President



Presidential Citation

- This year's citation program serves as a guide your club can use to *Make Dreams Real*.
- Based on the four Avenues of Service and membership growth, it provides a framework for a healthy, vibrant club.
- IRIP encourages your club to achieve the citation, not as a source of additional honor but as a way to ensure that your club is making a difference in the world.
- The program is also open to two of our partners in service, Rotaract and Interact, as a means of focusing and increasing the good that Rotary does in the world.

Presidential Citation

- To qualify for a citation, your club should initiate a service project that will reduce child mortality.
- Complete the membership goal and one activity from each of the five categories listed, between 1st, of July 2008 and 31st, of March 2009.
- The scope of the activities should be in proportion to the number of Rotarians in your club and their abilities, interests, and skills.

Presidential Citation

- **Service Project (required)**
- Initiate a local or international service project that reduces child mortality.
- **Membership Goal (required)**
- Achieve a net increase of **one member** by 31 March 2009. (*Suggested goal: Achieve a net membership increase of 10%*).

■ **Membership**

- Ensure that a club member attends the district membership development seminar.
- Have 10 percent or more of the membership, other than the club president, bring in new members by 31 March 2009.
- Ensure that a club member attends a ***regional presidential conference***.
- Recruit at least one alumnus from Foundation programs (Ambassadorial Scholars, Group Study Exchange team members, Rotary World Peace Fellows) or RI programs (former Youth Exchange students, Rotaract or Interact members) into membership by 31 March 2009.
- Give formal recognition to any club member who recruits more than one new member by 31 March 2009.

■ Membership cont....

- Encourage diversity of membership, and promote a balanced membership.
 - Induct new members from demographic groups not currently represented in your club.
 - Conduct an analysis of qualified professional and business leaders within the community to identify prospective members, and invite them into membership.
 - Retain members in Rotary by helping relocated Rotarians join a club in their new community.
 - Report new members monthly to RI by using Member Access at www.rotary.org
-

-
- **Club Service**
 - Have 5 percent of your members attend the RI Convention.
 - Give your local public or high school library a magazine subscription to *The Rotarian* (or Rotary regional magazine).
 - Ensure that incoming club officers and members attend the presidents-elect training seminar, district assembly, district Rotary Foundation seminar, and district conference, as appropriate.
 - Recognize a member who is providing outstanding service toward polio eradication.
 - Ensure that every Rotarian in your club is personally invited to participate in club activities, whether it be serving on a project committee or taking responsibility for some aspect of club service.
 - Recognize a Rotarian in your club who actively participated in the full range of club projects and programs with the Four Avenues of Service Citation.

- **Club Service cont....**

- Include non-Rotarian family members (for example, spouses, children, parents, widows, widowers) in the family of Rotary through service and fellowship activities on at least five occasions.
- Appoint a family of Rotary committee to assist with projects and activities for Rotarians and their families.
- Invite a speaker from a local nongovernmental organization, or present a club program on the United Nations Millennium Development Goals www.un.org/millenniumgoals
- Have a current or former Rotary World Peace Fellow speak at a club meeting.

■ Vocational Service

- Hold a forum on ethics and the application of The Four-Way Test in business and professional life.
- Present all new club members with a copy of The Four-Way Test or the *Declaration of Rotarians in Businesses and Professions* (200-EN).
- Sponsor a day for Rotarians to bring young people to their places of business to educate them about career opportunities.
- Have at least one member provide an internship at his or her place of business to a high school or college student.

-
- **Vocational Service cont...**
 - Organize a vocational service activity during Vocational Service Month (October).
 - Register a club member as a Rotary Volunteer, and encourage him or her to seek a Rotary Foundation Volunteer Service Grant.
 - Have a club member host a Group Study Exchange team member at his or her place of employment.
 - Participate in a career counseling and development project for young people in your community, stressing the importance of formal education in meeting career goals.
-

■ **Community Service**

- Conduct a community needs assessment and use it to establish new local service projects that will involve at least half of the club members and their spouses.
 - Sponsor a new Rotary Community Corps.
 - Conduct a water project in your community.
 - Conduct a project that decreases child mortality by addressing hunger issues in your community.
 - Sponsor or participate in a project that addresses the problems of child abuse or street children.
 - Sponsor or participate in a health awareness campaign or a project that addresses health concerns.
-

■ **Community Service cont...**

- Sponsor or participate in a community literacy project. Consider working with the International Reading Association* in developing the project.
 - Sponsor or participate in a project that addresses child safety, such as road or playground safety.
 - Share Rotary with the general public by placing a public service announcement, possibly one from Rotary's public image campaign, in a print publication, on a radio or TV program, or on a billboard.
 - Sponsor or participate in a project designed to promote peace or conflict resolution.
 - Conduct a community service project carried out by club members and Rotary Foundation alumni.
 - Sponsor a new Interact or Rotaract club.
 - Sponsor a participant in a Rotary Youth Leadership Awards (RYLA) event.
 - Adopt a school.
-

■ **International Service**

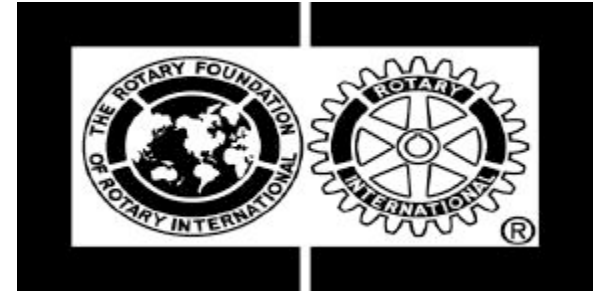
- Support or register a project on the World Community Service Project LINK.
- Using the United Nations Millennium Development Goals (www.un.org/millenniumgoals) as a starting point, develop and initiate a new project in support of international service that will be carried out by at least half of your members.
- Seek a Rotary Foundation Matching Grant or Health, Hunger and Humanity (3-H) Grant for a water, health, hunger, or literacy project with the goal of reducing child mortality.
- Achieve the Every Rotarian, Every Year goal of US\$100 or more per club member in Annual Programs Fund contributions to The Rotary Foundation.
- Conduct an international service project in support of water management and sanitation.
- Identify a qualified candidate to compete at the district level for at least one Rotary Foundation Educational Programs award.

■ **International Service cont...**

- Sponsor a Group Study Exchange team or host a team member, or participate in a Rotary Friendship Exchange.
- Conduct an international literacy project.
- Give a club program on Global Networking Groups, or have at least 5 percent of club members join one of these groups.
- Make a club contribution to PolioPlus or PolioPlus Partners.
- Implement a club program on PolioPlus and Rotary's role in the Global Polio Eradication Initiative.
- Have a club member serve as a Rotarian host counselor for a Rotary Foundation Ambassadorial Scholar.
- Conduct an international service project that addresses hunger issues for children.
- Sponsor or host a Youth Exchange student, Ambassadorial Scholar, or Rotary World Peace Fellow.

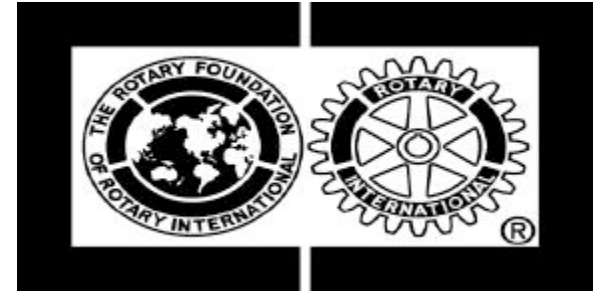
-
- **Summary of Activities for a PRESIDENTIAL CITATION**
 - Service project reducing child mortality.
 - Net increase of one member by 31st, of March.
 - Ensure that a club member attends a ***regional presidential conference***.
 - Ensure that incoming club officers and members attend the presidents-elect training seminar, district assembly, district Rotary Foundation seminar, and district conference, as appropriate.
 - Present all new club members with a copy of The Four-Way Test or the *Declaration of Rotarians in Businesses and Professions*.
 - Conduct a water project in your community.
 - Support or register a project on the World Community Service Project LINK.
-

The Rotary Foundation of Rotary International



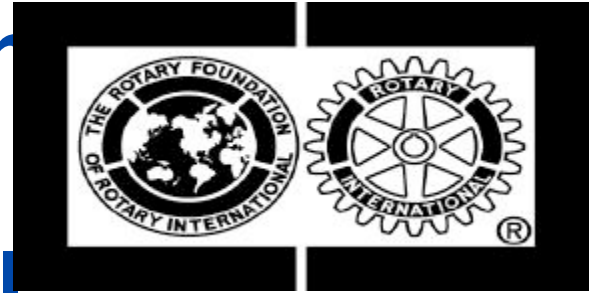
- **Goals for 2008-09:**
- **Keep our promise to eradicate polio.**
- **Participate in Your Foundation/ Our Foundation, a “lend a hand” program for sharing funds from club and district foundations to permanently establish The Rotary World Peace Fellows program and support global Polio eradication.**

The Rotary Foundation of Rotary International



- **Goals for 2008-09:**
- **Embrace the two pillars of support for The Rotary Foundation: the Annual Programs Fund and the Permanent Fund.**
- **Enhance Rotary's Public image.**
- **Support the Future Vision Plan of The Rotary Foundation.**

The Rotary Foundation of Rotary International



- **POLIO FREE WORLD.**
- **Matching the US\$ 100 million donated by Bill and Melinda Gates foundation.**
- **US\$ 1000 per Club per annum.**

The Rotary Foundation of Rotary International

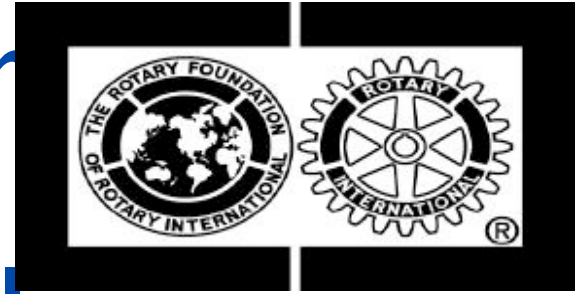


EVERY
■ ROTARIAN
■ EVERY
■ YEAR

Annual Programs Fund

- The target is US\$ 100 per Rotarian.
- Clubs will commit only to what they will declare.
- Club PH fellows could be part of the total Club commitment.
- A Club of 30 members commits US\$200 per member for a total of US\$ 6000 would achieve his goal if 6 members each apply for one PH fellow.

The Rotary Foundation of Rotary International



Rotary Centers for International Studies in
peace and conflict resolution



The impact of Rotary Centers

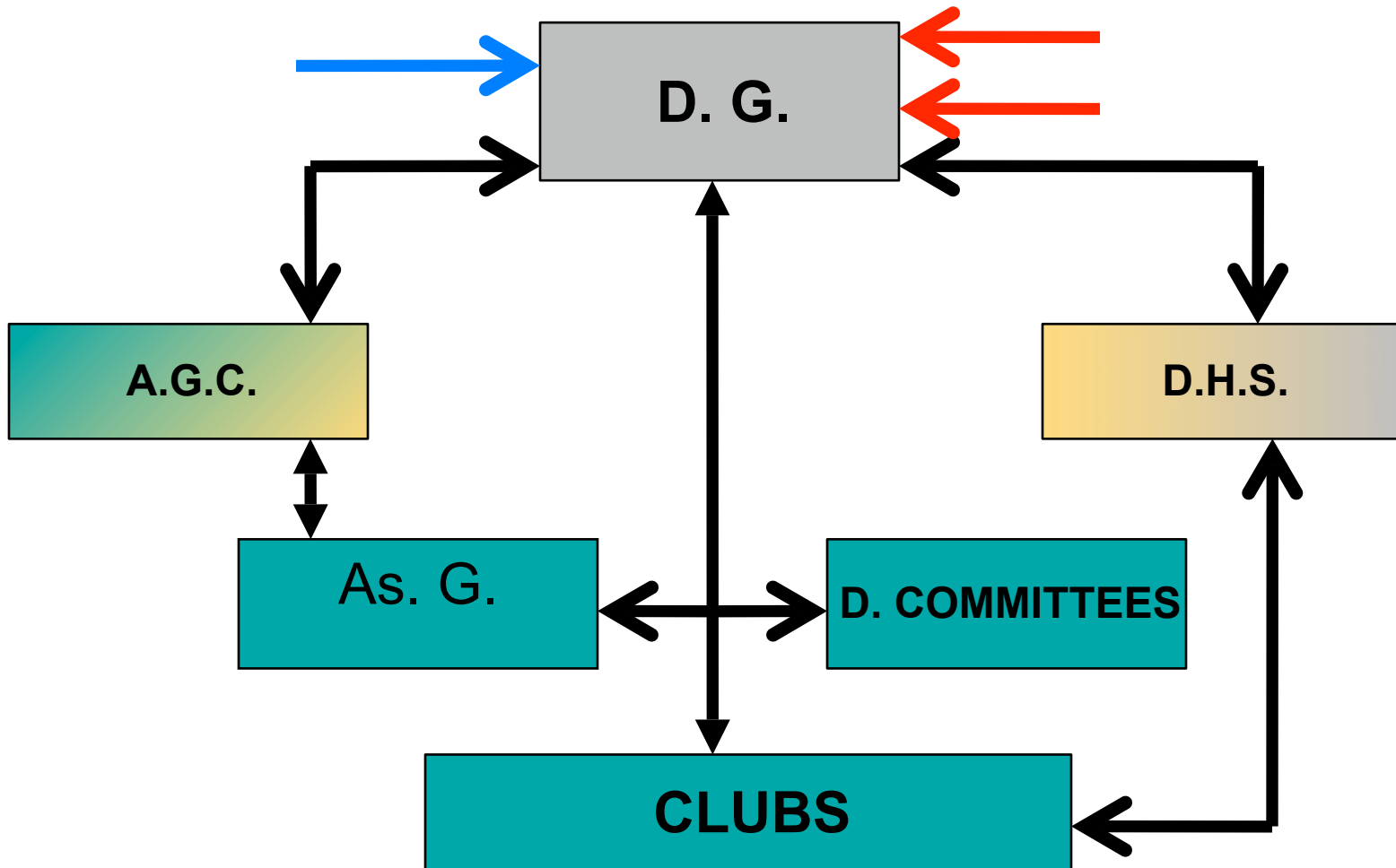
District 2450

- Enabling Clubs.
- Learning more about Rotary.
- Continuous education and training.
- Leadership skills.
- Team work.
- Better communication.
- Better administration.
- Stewardship.
- More service projects.

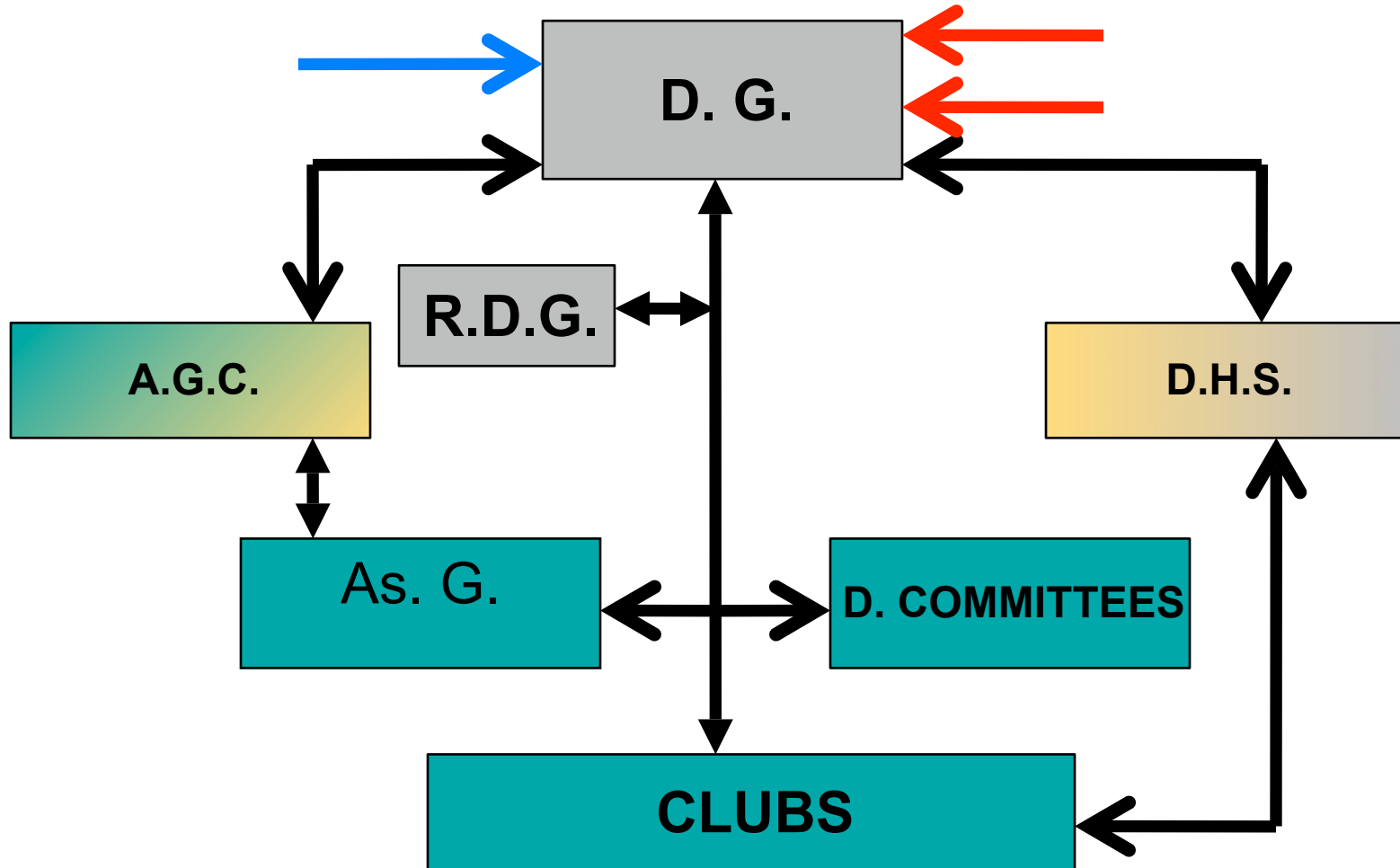
FELLOWSHIP

SERVICE PROJECTS

Communication



Communication



District 2450

- ***EVENTS***
- **INTERNATIONAL CONVENTION 2009**



2009 CONFERENCES

- DISTRICT CONFERENCE
- APRIL 30TH – MAY 3RD

- PRESIDENTIAL CONFERENCE
- FEBRUARY 6th – 7th

District Fund Budget

April 2008

IDG Zakaria El-Shafei

District Fund Budget 08/09

■ INCOME

□ Levy fees* 4,200 Rotarians x USD 14	USD58,800
□ Seed money receivable from 07/08	USD10,000
□ Residue from 07/08	<u>USD 5,000</u>
Total income	USD73,800

Notes:

- Levy fees reduced from USD 15 to USD 14 per Rotarian.
- Seed money represents advance working capital to be paid to incoming district team as per district conference resolution.

District Fund Budget 08/09

■ EXPENDITURE:

□ Awards	USD 8,000
□ District secretariat printing material-	USD12,000
□ District roster (directory)	USD 3,000
□ DTTS	USD15,000
□ GSE*	USD12,500
□ Image of Rotary/public relations+	USD 4,000
□ Seed money payable to 09/10	USD10,000
□ Training	USD 5,000
□ Website support	<u>USD 4,300</u>
Total Expenditure	USD73,800

District Fund Budget 08/09

■ Notes on Expenditure:

- (-) includes costs to translate Rotary Publications in Arabic.
- (*) cost for 2 GSE teams.
- (+) funding will be used to increase general awareness of Rotary and its activities in District.

Comparative Budget Analysis

	RY 07/08	RY 08/09
INCOME:		
Levy Fees	63,000	58,800
Seed Money	10,000	10,000
Residue from Previous Year	n/a	5,000
Website Advertising	5,000	n/a
Subscriptions to District Mag	18,000	n/a
Total Income	96,000	73,800

Comparative Budget Analysis

EXPENDITURE	07/08	08/09
Awards	8,000	8,000
District Roster	4,000	3,000
District Secr. Printing	12,000	12,000
DTTS	15,000	15,000
GSE	8,000	12,500
Image of Rotary	n/a	4,000
District Mag.	18,000	n/a
District Projects	10,500	n/a
COL Provision	1,500	n/a
Seed Money	10,000	10,000

Comparative Budget Analysis, Continued

EXPENDITURE	07/08	08/09
Training	5,000	5,000
Website Support	4,000	4,300
Total Expenditure	96,000	73,800

WORK HARD THANK YOU

- TO
- MAKE
- DREAMS
- REAL

